

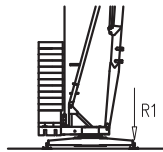
GRU A MONTAGGIO RAPIDO
GRUE A MONTAGE RAPIDE
GRUA DE RAPIDO MONTAJE
GRUA DE MONTAGEM RAPIDA
QUICK SELF-ERECTING CRANE
HYDRAULISCHER SCHNELLMONTAGEKRAN

CE FEM 1.001 – A3

Curve di carico | Courbes de charges | Load diagrams | LastKurven | Curvas de cargas

	<table border="1"> <tr><td>3</td><td>20</td><td>39</td></tr> <tr><td>800</td><td>800</td><td>800</td></tr> </table> m kg	3	20	39	800	800	800	OP	<table border="1"> <tr><td>3</td><td>20</td><td>39</td></tr> <tr><td>1000</td><td>1000</td><td>1000</td></tr> </table> m kg	3	20	39	1000	1000	1000																				
3	20	39																																	
800	800	800																																	
3	20	39																																	
1000	1000	1000																																	
	<table border="1"> <tr><td>11,1</td><td>12</td><td>14</td><td>16</td><td>18</td><td>20</td><td>22</td><td>24</td><td>26</td><td>28</td><td>30</td><td>32</td><td>34</td><td>36</td><td>38</td><td>40</td></tr> <tr><td>5000</td><td>4540</td><td>3730</td><td>3150</td><td>2720</td><td>2390</td><td>2120</td><td>1910</td><td>1730</td><td>1570</td><td>1440</td><td>1330</td><td>1230</td><td>1150</td><td>1070</td><td>1000</td></tr> </table> m kg	11,1	12	14	16	18	20	22	24	26	28	30	32	34	36	38	40	5000	4540	3730	3150	2720	2390	2120	1910	1730	1570	1440	1330	1230	1150	1070	1000		
11,1	12	14	16	18	20	22	24	26	28	30	32	34	36	38	40																				
5000	4540	3730	3150	2720	2390	2120	1910	1730	1570	1440	1330	1230	1150	1070	1000																				
	<table border="1"> <tr><td>11,8</td><td>12</td><td>14</td><td>16</td><td>18</td><td>20</td><td>22</td><td>24</td><td>26</td><td>28</td><td>29,6</td></tr> <tr><td>5000</td><td>4910</td><td>4030</td><td>3410</td><td>2950</td><td>2590</td><td>2300</td><td>2070</td><td>1880</td><td>1710</td><td>1600</td></tr> </table> m kg	11,8	12	14	16	18	20	22	24	26	28	29,6	5000	4910	4030	3410	2950	2590	2300	2070	1880	1710	1600												
11,8	12	14	16	18	20	22	24	26	28	29,6																									
5000	4910	4030	3410	2950	2590	2300	2070	1880	1710	1600																									
		<table border="1"> <tr><td>20,1</td><td>22</td><td>24</td><td>26</td><td>28</td><td>30</td><td>32</td><td>34</td><td>36</td><td>38</td><td>40</td></tr> <tr><td>2500</td><td>2250</td><td>2030</td><td>1840</td><td>1690</td><td>1550</td><td>1440</td><td>1340</td><td>1250</td><td>1170</td><td>1100</td></tr> </table> m kg	20,1	22	24	26	28	30	32	34	36	38	40	2500	2250	2030	1840	1690	1550	1440	1340	1250	1170	1100											
20,1	22	24	26	28	30	32	34	36	38	40																									
2500	2250	2030	1840	1690	1550	1440	1340	1250	1170	1100																									
		<table border="1"> <tr><td>21,4</td><td>22</td><td>24</td><td>26</td><td>28</td><td>29,6</td></tr> <tr><td>2500</td><td>2410</td><td>2180</td><td>1980</td><td>1810</td><td>1700</td></tr> </table> m kg	21,4	22	24	26	28	29,6	2500	2410	2180	1980	1810	1700																					
21,4	22	24	26	28	29,6																														
2500	2410	2180	1980	1810	1700																														
		<table border="1"> <tr><td>17,3</td><td>18</td><td>20</td><td>22</td><td>24</td><td>26</td><td>28</td><td>30</td><td>32</td><td>34</td><td>36</td><td>38</td><td>40</td></tr> <tr><td>3000</td><td>2860</td><td>2520</td><td>2250</td><td>2030</td><td>1840</td><td>1690</td><td>1550</td><td>1440</td><td>1340</td><td>1250</td><td>1170</td><td>1100</td></tr> </table> m kg	17,3	18	20	22	24	26	28	30	32	34	36	38	40	3000	2860	2520	2250	2030	1840	1690	1550	1440	1340	1250	1170	1100							
17,3	18	20	22	24	26	28	30	32	34	36	38	40																							
3000	2860	2520	2250	2030	1840	1690	1550	1440	1340	1250	1170	1100																							
		<table border="1"> <tr><td>18,4</td><td>20</td><td>22</td><td>24</td><td>26</td><td>28</td><td>29,6</td></tr> <tr><td>3000</td><td>2710</td><td>2420</td><td>2180</td><td>1980</td><td>1810</td><td>1700</td></tr> </table> m kg	18,4	20	22	24	26	28	29,6	3000	2710	2420	2180	1980	1810	1700																			
18,4	20	22	24	26	28	29,6																													
3000	2710	2420	2180	1980	1810	1700																													
	<table border="1"> <tr><td>3</td><td>14</td></tr> <tr><td>4000</td><td>4000</td></tr> </table> m kg	3	14	4000	4000		<table border="1"> <tr><td>3</td><td>14</td></tr> <tr><td>3000</td><td>3000</td></tr> </table> m kg	3	14	3000	3000																								
3	14																																		
4000	4000																																		
3	14																																		
3000	3000																																		

Reazioni | Reactions | Réactions | Eckdrücke | Reacciones | Reações



R1 ● 31 t ■ 24 t

▲ 17.5 t ○ 30.6 t

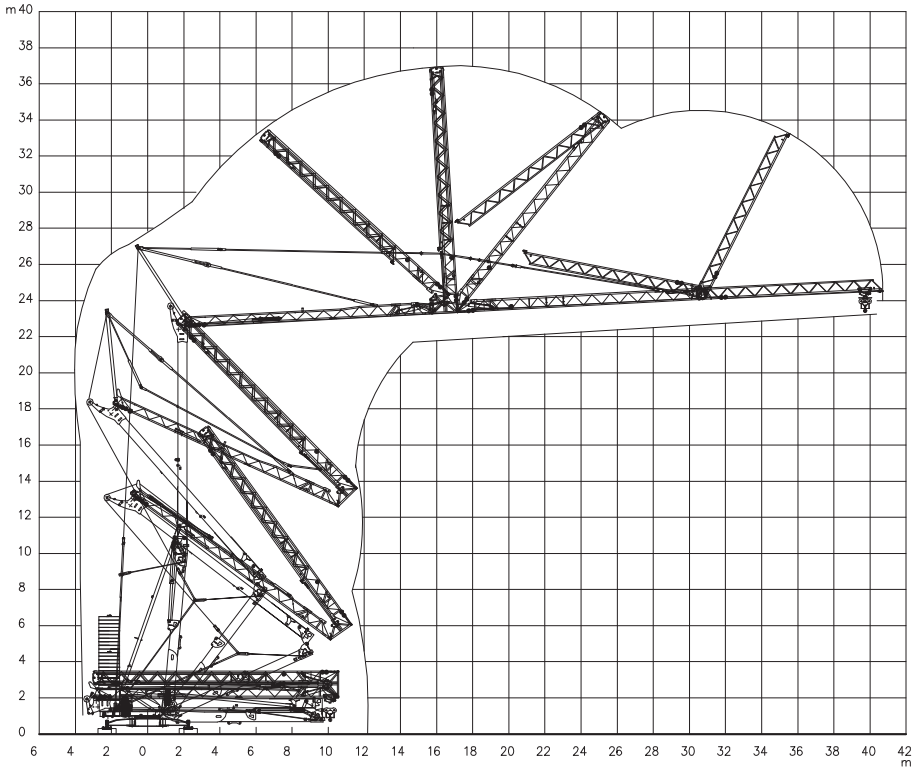
● Reazioni in servizio | Reactions in service | Réactions en service | Reaktionskräfte in betrieb
Reacciones en servicio | Em serviço

■ Reazioni fuori servizio | Reactions out of service | Réactions hors service | Reaktionskräfte außer betrieb
Reacciones fuera de servicio | Fora de serviço

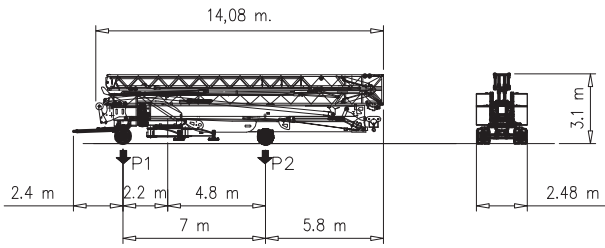
▲ Peso della gru senza assali | Dead weight without transport axles | Poids de construction sans eissieux | Kontruktionsgewicht ohne transportachse
Peso de la grua sin tren de transporte | Peso de grua sem carro de trasporte

○ Peso zavorra rotante | Ballast weight | Poids du lest | Ballastgewicht
Peso de lastre | Peso de lastre rotativo

Montaggio | Montage | Erection | Montage | Montaje | Montagem



Trasporto | Transport | Transport | Transport | Transporte



P1	kg	10050
P2	kg	12630
Ptot	kg	22680

Meccanismi | Mechanisms | Mécanismes | Antriebe | Mecanismos

V12.40 Sollevamento Hoisting Levage Heben Elevaci3n Eleva7ao	m/min t	<table border="1"> <tr><td>4</td><td>15</td><td>30</td><td>55</td></tr> <tr><td>2.5</td><td>2.5</td><td>1.0</td><td>0.6</td></tr> </table>				4	15	30	55	2.5	2.5	1.0	0.6			<p>V12.40 8,8 kW (12 Hp) 18 kVA</p>
		4	15	30	55											
2.5	2.5	1.0	0.6													
m/min t	<table border="1"> <tr><td>2</td><td>7,5</td><td>15</td><td>27,5</td></tr> <tr><td>5,0</td><td>5,0</td><td>2,0</td><td>1,2</td></tr> </table>				2	7,5	15	27,5	5,0	5,0	2,0	1,2				
	2	7,5	15	27,5												
5,0	5,0	2,0	1,2													
V15.45 Sollevamento Hoisting Levage Heben Elevaci3n Eleva7ao	m/min t	<table border="1"> <tr><td>4</td><td>15</td><td>30</td><td>55</td></tr> <tr><td>3</td><td>3</td><td>2,0</td><td>0,7</td></tr> </table>				4	15	30	55	3	3	2,0	0,7		<p>V15.45 11 kW (15 Hp) 20 kVA</p>	
		4	15	30	55											
3	3	2,0	0,7													

Carrello Trolleying Distribuci3n			1a			
			2a	0 → 45	m/min	2.2 kW / 3 kW
			3a			
			1a			
			2a	0 → 17	m/min	3 kW
			3a			
			1a			
			2a	0 → 17	m/min	3 kW
			3a			
Rotazione Slewing Orientaci3n			1a			
			2a	0 → 0.8	giri/min tr/min rp/min	2.2 kW
			3a			

Rete elettrica | Réseau | Mains supply | Netzstrom | Red | Rede electrica

400 V - 50 Hz

Potenza elettrica necessaria | Puissance électrique nécessaire | Necessary electric power
Anschlusswert | Potencia electrica necesaria

V12.40 18 kVA
V15.45 20 kVA

Conforme alla direttiva 2000/14/CE sul livello acustico
Conforme à la directive 2000/14/CE sur le niveau acoustique
In compliance with the 2000/14/CE instruction on noise level
Gemäss EWG-Richtlinie 2000/14/CE über Schall-Leistungspegel
Conforme con la direttiva 2000/14/CE sobre el nivel acustico

FEM 1.001 – A3